

**Improve Product Quality, Reduce Oil Expenses**



**Use your Oil maximum**

**Save cost on Tools & Dies, Filters & Oil replacement**

- ◆ No Filter Element
- ◆ No Replacement Cost
- ◆ Improved Product Finish
- ◆ Reduced Oil Consumption
- ◆ Extended Oil Change Period
- ◆ Reduced Machine downtime
- ◆ Reduced Storage & Disposal Cost of Waste Oil
- ◆ Reduced Pollution and Environmental Impact



**Use Oilmax Save Environment**

**One Time Installation, Lifelong Savings**

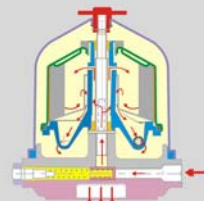
- ▶ Wire Drawing
- ▶ Cold Forming
- ▶ Fastener Mfg.
- ▶ Heat Treatment
- ▶ Bright Bar Mfg
- ▶ Thread Rolling
- ▶ Super Finishing
- ▶ Honing
- ▶ Grinding
- ▶ Gear Boxes
- ▶ Cement Mills
- ▶ Coal Mills
- ▶ Crushers
- ▶ Transmissions
- ▶ Marine Engines
- ▶ Port Equipments
- ▶ Mining Equipments
- ▶ DG Sets
- ▶ Cutting Oil
- ▶ EDM Oil
- ▶ Spindle Oil
- ▶ Hydraulic Oil
- ▶ Gear Oil
- ▶ Turbine Oil
- ▶ Engine Oil
- ▶ Furnace Oil
- ▶ Thermic Fluid
- ▶ Transmission Oil
- ▶ Compressor Oil
- ▶ Bio Diesel / WVO
- ▶ Anti Rust Oil
- ▶ Stamping Oil
- ▶ Honing Oil
- ▶ Quenching Oil
- ▶ Water Emulsions
- ▶ Test Bed Oil

### Why Centrifugal Oil Cleaner

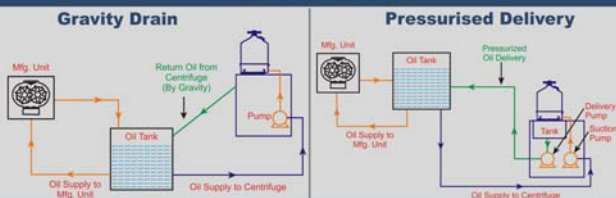
Centrifugal Oil Cleaner removes very fine dirt from Oil upto 1µ and below, by Centrifugal force created in centrifuge rotor. Conventional filters can not remove such fine dirt from oil. There are no consumables hence no recurring cost. Collected dirt can be easily cleaned and the unit put back to use again. With clean oil, wear of tools and dies is reduced and job finish is improved. The oil need not be replaced frequently, thereby saving substantially on oil expenses and protecting Environment.

### Working Principle

Centrifugal Oil Cleaner works on reaction turbine principle. Oil enters Centrifuge under pressure and escapes through tangentially opposite nozzles of rotor producing rotor speed upto 8000 RPM. The resultant Centrifugal force removes dirt from the oil, depositing it on the inner wall of rotor in a dense cake form. Clean oil drains back to the oil tank by gravity.



### Schematic Diagram



### Construction



### Installations

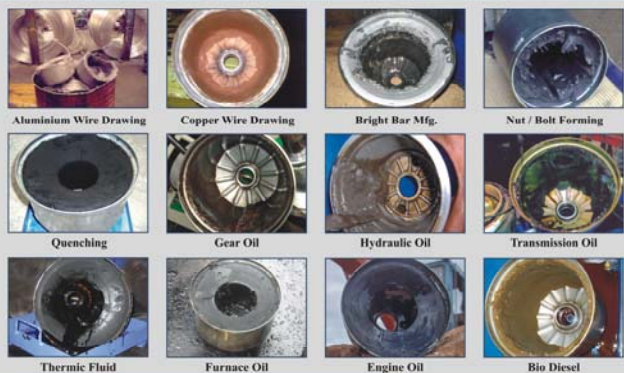


### Product Range



Oil Cleaning System Model	Nominal Flow Rate	Dirt Holding Capacity	Dimension (W x D x H) Inch
OCS 500	500 LPH	500 cc	24 x 16 x 35
OCS 750	750 LPH	1000 cc	24 x 16 x 35
OCS 1500	1500 LPH	2000 cc	24 x 18 x 39
OCS 4000	4000 LPH	6000 cc	30 x 22 x 46
OCS 8000	8000 LPH	12000 cc	40 x 32 x 48
OCS 1000P	1000 LPH	1000 cc	30 x 20 x 40
OCS 1500P	1500 LPH	2000 cc	30 x 20 x 44
OCS 4000P	4000 LPH	6000 cc	36 x 24 x 54

### Sludge Collected



### Customers



**Oilmax Systems Pvt. Ltd.**  
 38/2/12, Narhe Dhayni Road, Narhe, Pune 411041 India  
 Tel: +91 20 25431052, 25467041, Skype: oilmax.systems  
 Email: marketing@oilmax.co.in, Web: www.oilmaxsystems.com

